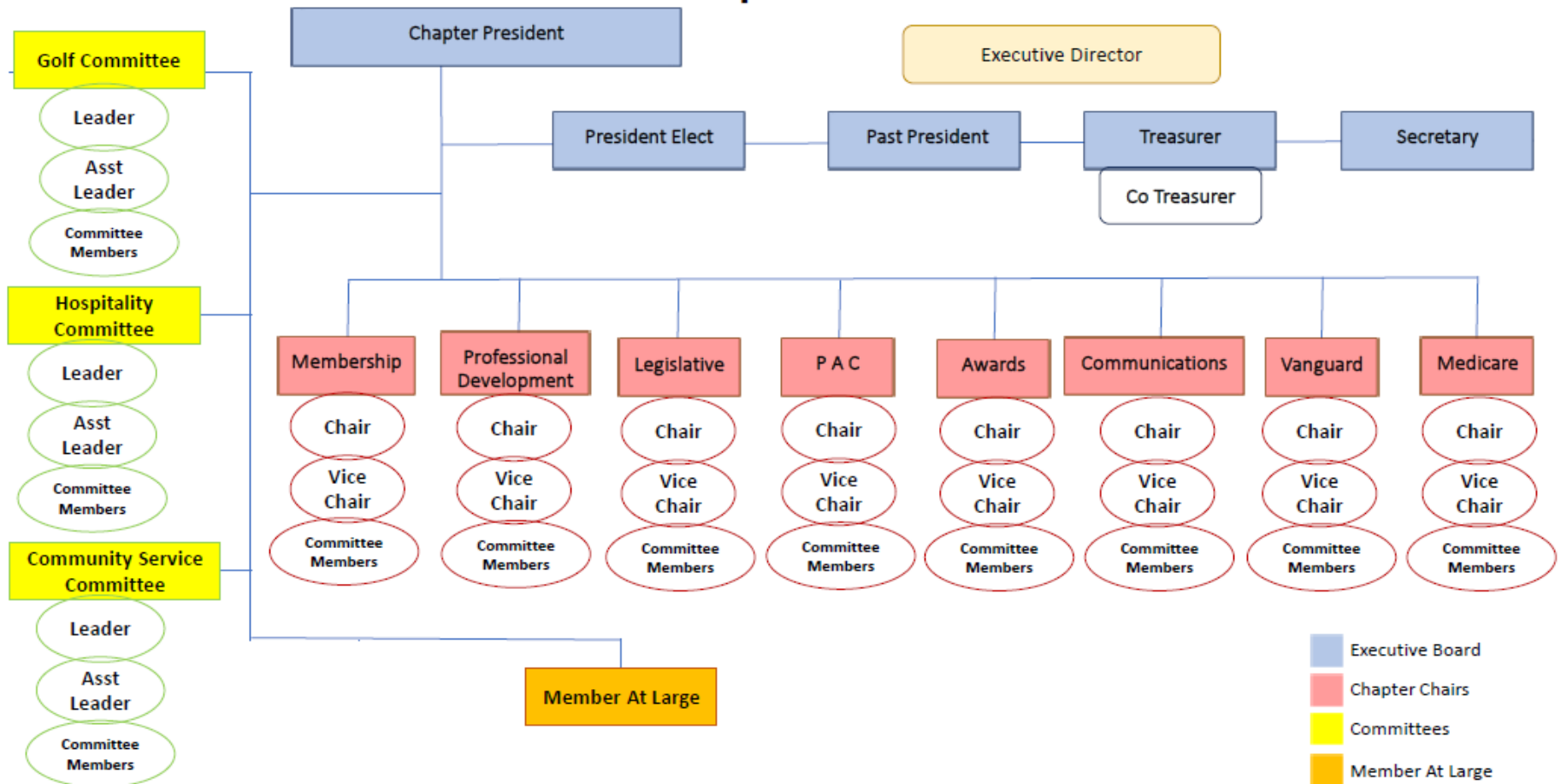


<u>Board Position</u>	<u>Duties/Responsibilities</u>	<u>Elected Officer/Non-Voting Member</u>	<u>Elected Officer/Voting Member</u>	<u>Appointed Officer/Non-Voting Members</u>
President	The President shall be the chief elected officer of this Association and shall preside over all meetings of this Association and the Board of Directors. The President shall be an ex officio member of all standing and special committees except the Nominations Committee.	Elected President		
President-Elect	The President-Elect in the absence of the President shall preside at all meetings of this Association and the Board of Directors and shall perform such other duties as may be assigned by the President or Board of Directors.		Elected President Elect	
Immediate Past President	The Immediate Past President shall serve as an advisor to the Board of Directors and perform other duties as assigned by the President or Board of Directors.		Immediate Past President	
Secretary	The Secretary shall be responsible for keeping all records of membership, attendance, membership dues and minutes of the meetings of this Association and the Board of Directors and shall perform other duties as may be assigned by the President or Board of Directors.		Secretary	
Treasurer	The Treasurer shall be responsible for receiving all funds and dues paid to this Association. Dues shall be forwarded to the National Association of Health Underwriters, where they will be deposited and the local portion remitted back to this Association on a monthly basis. The Treasurer shall deposit all other funds in this Association's official depository(ies) and shall disburse such funds upon the order of the Board of Directors. The accounts and books of the Treasurer and this Association shall be open at all time for inspection by the President, the Board of Directors, and any authorized auditors. The Treasurer shall be responsible for the completion and submission of forms required by laws governing the administration and/or tax status of this Association.		Treasurer	Vice Treasurer
Membership	Making every effort toward growing your membership, while contributing toward common goals of the chapter, as a committee member. Maintaining good membership records. Promoting monthly dues payments through recurring monthly payments – members on bank draft have a higher retention rate than annual paying members. Recruitment of new members and promotion of Association benefits and values. Monitor and follow up with renewals with current members. Participating on monthly teleconference calls with your State		Membership Chair	Membership Vice-Chair & Membership Committee
Professional Development	Identify key areas of the market & education to promote value to increase membership & chapter revenues. Improving the knowledge and expertise of the members by providing quality education, and a source providing a source of revenue for the chapter by seeking out & securing key sponsorships. Provide quality programming for monthly luncheon & other chapter events. Organize and develop CE (Continuing Education) classes and events for IEAHU Members' education.		Professional Development Chair	Professional Development Vice-Chair & Professional Development Committee
Legislation	Participate in Legislative activities and communicate updates with IEAHU members.		Leg Chair	Leg Vice-Chair & Leg Committee
Political Action	Participate in PAC activities and communicate updates with IEAHU members.		PAC Chair	PAC Vice-Chair & PAC Committee
Awards	Track and document IEAHU activities for award consideration.		Awards Chair	Awards Vice-Chair & Awards Committee
Communications	Organize and develop outreach of IEAHU Events & IEAHU news with members through all communication channels including Social Media.		Communications Chair	Communications Vice-Chair & Communications Committee
Vanguard	The chair must execute Vanguard Council initiatives at the local level that have been strategically designed to support long-term growth, retention and engagement. These initiatives, along with supporting resources, will be provided to local chairs from the national committee or Vanguard Council state chair. Projects that have been developed include the Vanguard Council Goes to College Initiative, established to inform college student of the health insurance industry and pair interested students with an internship in the field for college credits, and a Networking Event Planning Guidebook, to foster events to bring members and non-members together for relationship building and as a revenue generating opportunity for chapters. Attend local board chapter meetings to represent the Vanguard Council's objectives, goals, and projects. Collaborate with like-minded local committees to ensure all efforts are maximized and cohesive.		Vanguard Chair	Vanguard Vice-Chair & Vanguard Committee

Medicare	Medicare Chair is to appoint a working committee, with a max. of 4 lives, all familiar with Medicare. Help the Pres-Elect with the Sales Symposium held every March and be put on the working committee for the Senior Summit held every August. As the Chair and spoke person for the Chapter, it is their duty to make sure that Medicare is represented at every event, as to ensure Medicare agents participate and become a part of the association for those not currently enrolled in NAHU. Additionally, try to get those non-members to our monthly luncheons. When working with the Program chair, include continued education and CE for the Medicare Agent. Reinforce the importance of the Social Security Certification.		Medicare Chair	Medicare Vice-Chair & Medicare Committee
Golf Committee	Responsible for Planning & Organizing the Chapter's Annual Golf Event			Golf Committee Leader, Co-Leader & Golf Committee
Hospitality Committee	Responsible for greeting and sign-in documentation for IEAHU Events.			Hospitality Committee Leader, Co-Leader & Hospitality Committee
Community Service Committee	Organizing IEAHU Community Service activities and Charitable events.			Community Service Committee Leader, Co-Leader & Community Service Committee
Member-at-Large	Assist committees and activities as needed.			Member At Large

IEAHU Chapter BOD Chart



IEAHU BOD & Committees 2019-2020

Executive Officers

- President
- President-Elect
- Immediate Past President
- Secretary
- Treasurer

Elected Officers/ Voting Board Members

- President-Elect
- Immediate Past President
- Secretary
- Treasurer
- Membership Chair
- Professional Development Chair
- Legislative Chair
- PAC Chair
- Awards Chair
- Communications Chair
- Vanguard Chair
- Medicare Chair

Appointed Officers/ Non-Voting Board Members

- Vice Treasurer
- Membership Vice-Chair
- Professional Development Vice-Chair
- Legislative Vice-Chair
- Vice PAC Vice-Chair
- Awards Vice-Chair
- Communications Vice-Chair
- Vanguard Vice-Chair
- Medicare Vice-Chair

- Member At Large

Appointed Committees/ Non-Voting

- Golf Committee Leader, Golf Co-Chair & Committee
- Hospitality Committee Leader, Hospitality Co-Chair & Committee
- Community Service Committee Leader, Community Service Co-Leader & Community Service Committee